

## PATIENT INFORMATION

# EEG

➡ An EEG is a test that records your brain waves

## Information for Children and Adults with Learning Disabilities



# At home



- Wash your hair.



- Eat some food.



Keppra

Ritalin

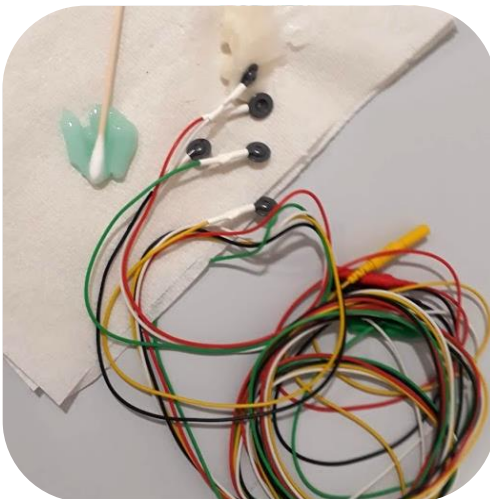
Circadin

- Take your normal medicines.
- Bring a list of medication

# At the hospital



- You will sit in a comfy chair and relax.
- You will not feel anything from the EEG.



- Wires will be put on your head with a paste.
- We will ask you to open and close your eyes.



- You may do some deep breathing



- You may look at a flashing light.



- The test will take one hour.
- When the test is finished you can go home
- Your results will go to your doctor

## More information

If you have any questions call us on **01905 760697**.

For advice and assistance with any hospital visit then call the hospital switch on **01905 763333** and ask for the learning disability support team

**If your symptoms or condition worsens, or if you are concerned about anything, please call your GP, 111, or 999.**