

Worcestershire

Acute Hospitals NHS Trust



Director of Asset Management & ICT
(James Longmore)

Asset Management and ICT

Facilities Management

PFI

ICT

Head of Estates
(Ray Cochrane)

Property Manager (WRH)
(Ruth Bray)

Energy Manager (WRH)
(Vacant)

The Alexandra Hospital Redditch
(AHR)

Kidderminster Treatment Centre
(KTC)

Principal Engineer (WRH)
(Simon Noon)

Water Quality Tech
(John Foxall)

Estates Officer
(Stefan Clift)

Asst. Estates Officer
(Vacant)

Project Manager (Interim)
(Martyn Hill)

Project Manager (Interim)
(Richard Leek)

Project Manager (Interim PT)
(Jim Edwards)

Project Manager (Interim PT)
(Sarah Wild)

Project Manager (FTA)
(Vacant)

Project Manager
(Chris Harrison)

Estates Officer
(Benjamin Agbasi)

Asst. Estates Officer
(Vacant)

Technician (Mechanical)
(Tim Onions)

Technician (Electrical)
(Dave Stephens)

Clerical Assistant
(Michelle Franklin)

HD Coordinator
(Sarah Hannah)

Estates Administrator
(Tina Pardoe)

Craftsman (Building)
(Tony Hands)

Electrician
(Bally Sandhu)

Electrician
(Steven Wilcox)

Craftsman (Mech)
(Vacant – OBC reqd)

Craftsman (Mech)
(Robin Banner)

Maint. Assistant
(Adrian Williams)

Fitter (Mechanical)
(Chris Wardman)

Fitter (Mechanical)
(Mark Ward)

Electrician
(Mark Hannah)

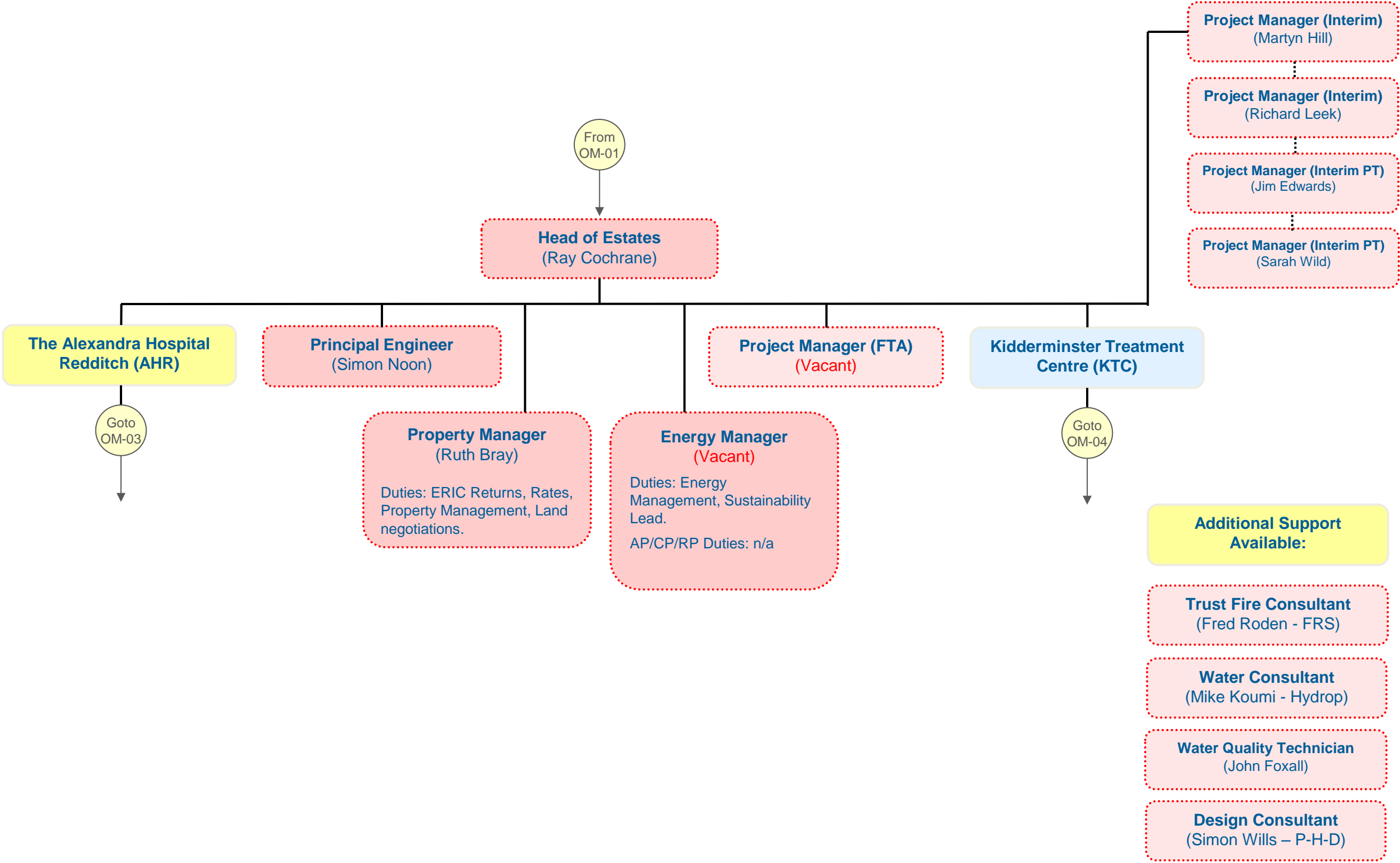
Electrician
(Luke Wyre)

Carpenter
(Lee Cashmore)

Craftsman (Building)
(Tony Murphy)

Labourer (Grounds)
(Steve Matthews)

Maint. Assistant
(Dave Gebhard)*



Additional Support Available:

Property Manager (WRH)
(Ruth Bray)

Energy Manager (WRH)
(Vacant)

Project Manager (FTA)
(Vacant)

Project Manager (Interim)
(Martyn Hill)

Project Manager (Interim)
(Richard Leek)

Project Manager (Interim PT)
(Sarah Wild)

Trust Fire Consultant
(Fred Roden - FRS)

Water Consultant
(Mike Koumi - Hydrop)

Design Consultant
(Simon Wills – P-H-D)

Project Manager (Interim PT)
(Jim Edwards)

